

Quick Start Guide

— UG6x LoRa Gateway



Quick Start Guide

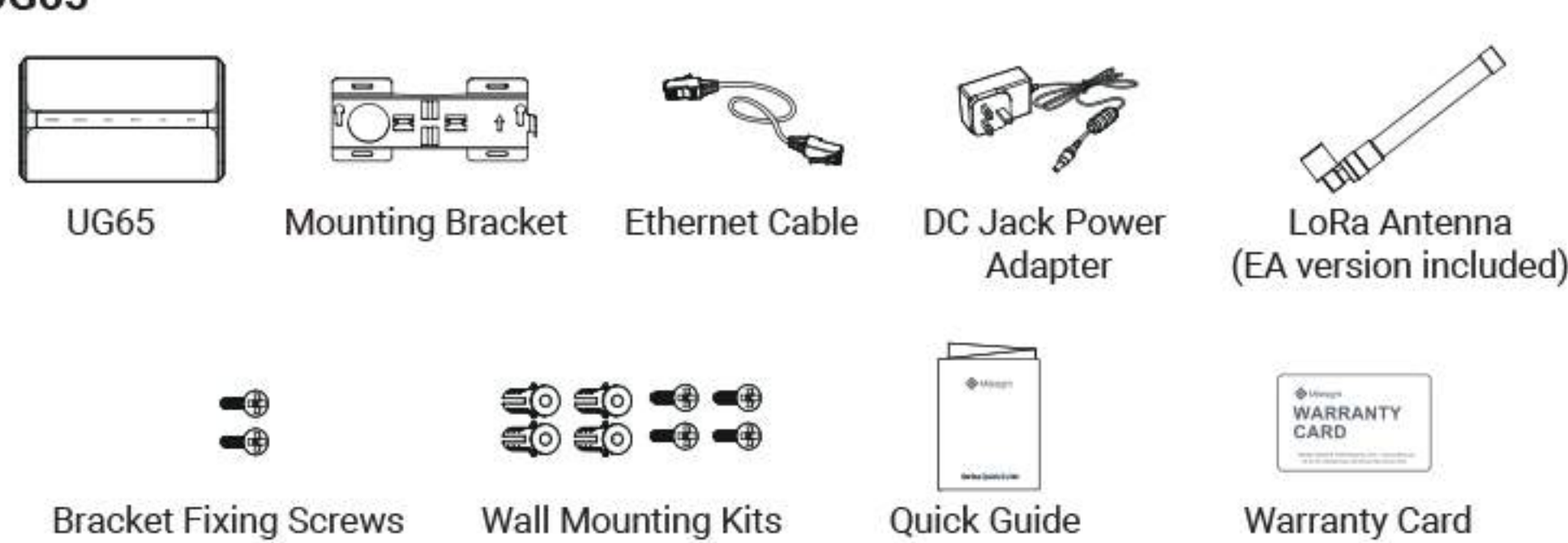
UG6x LoRa Gateway

V1.0

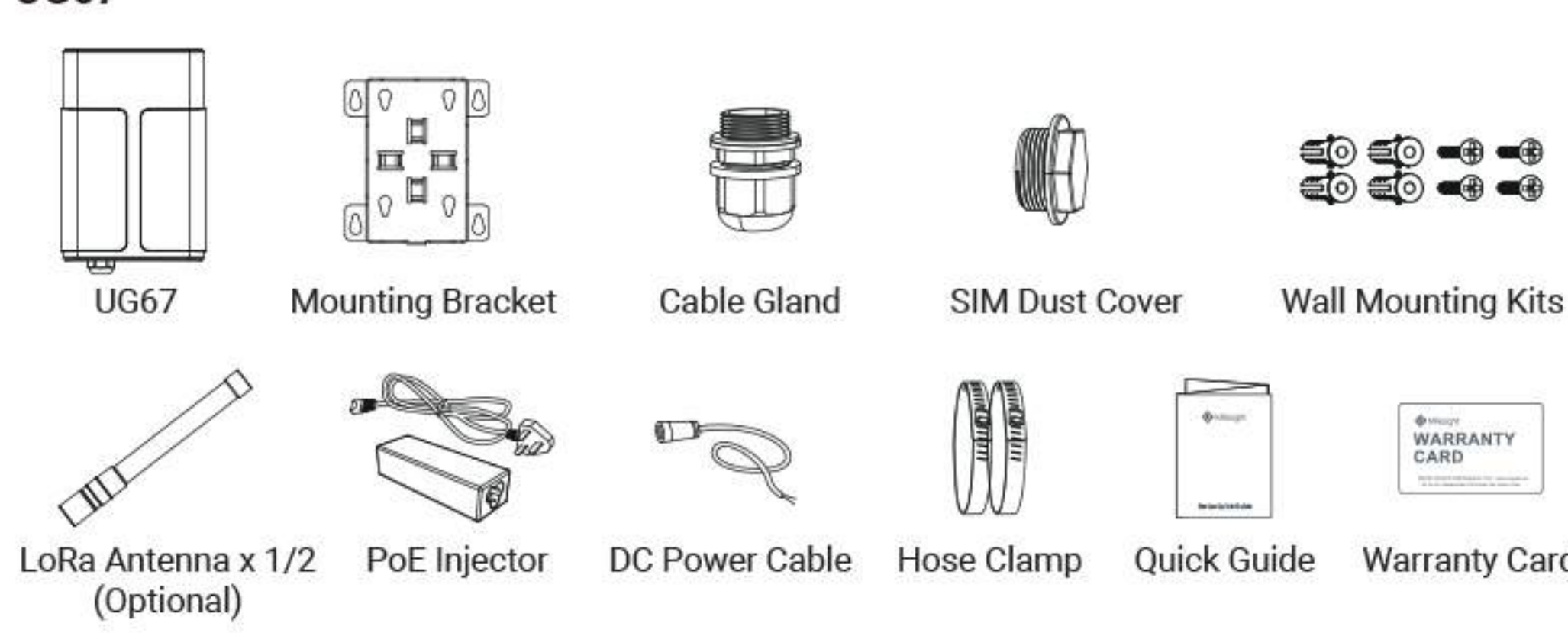
Packing List

Please check the package contents to verify that you have received the items below.

UG65



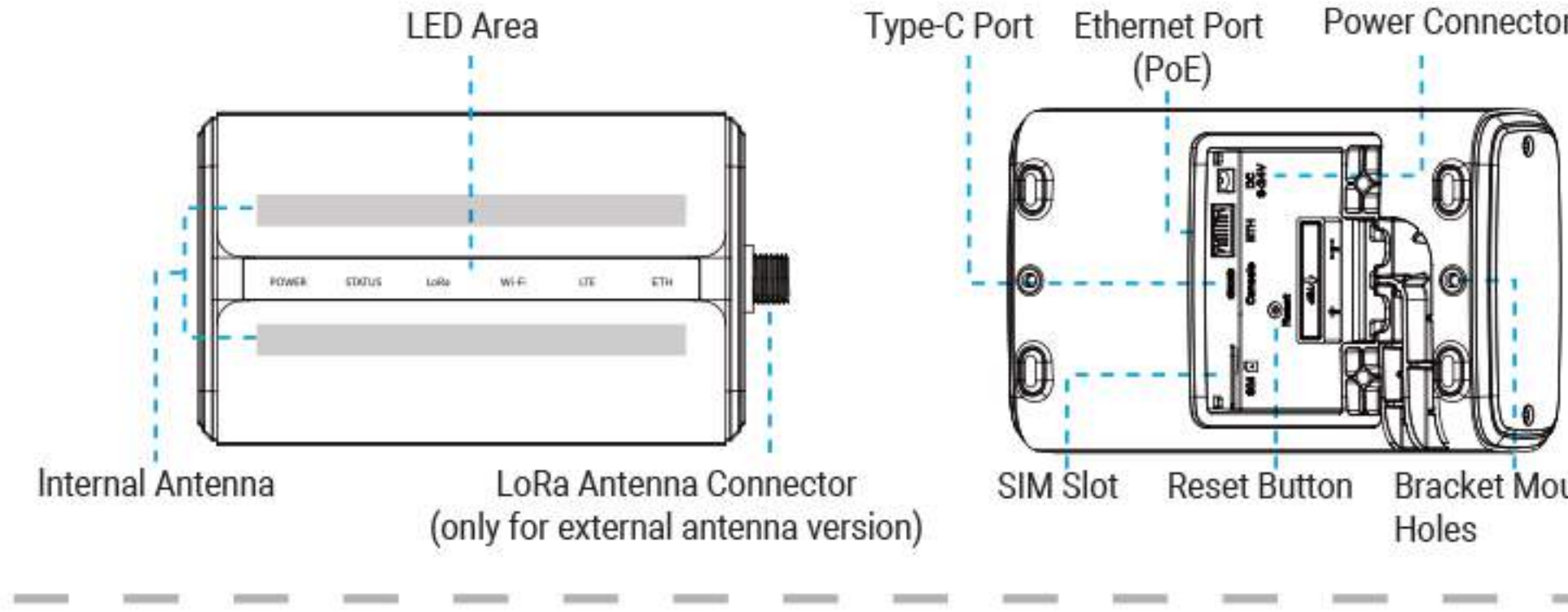
UG67



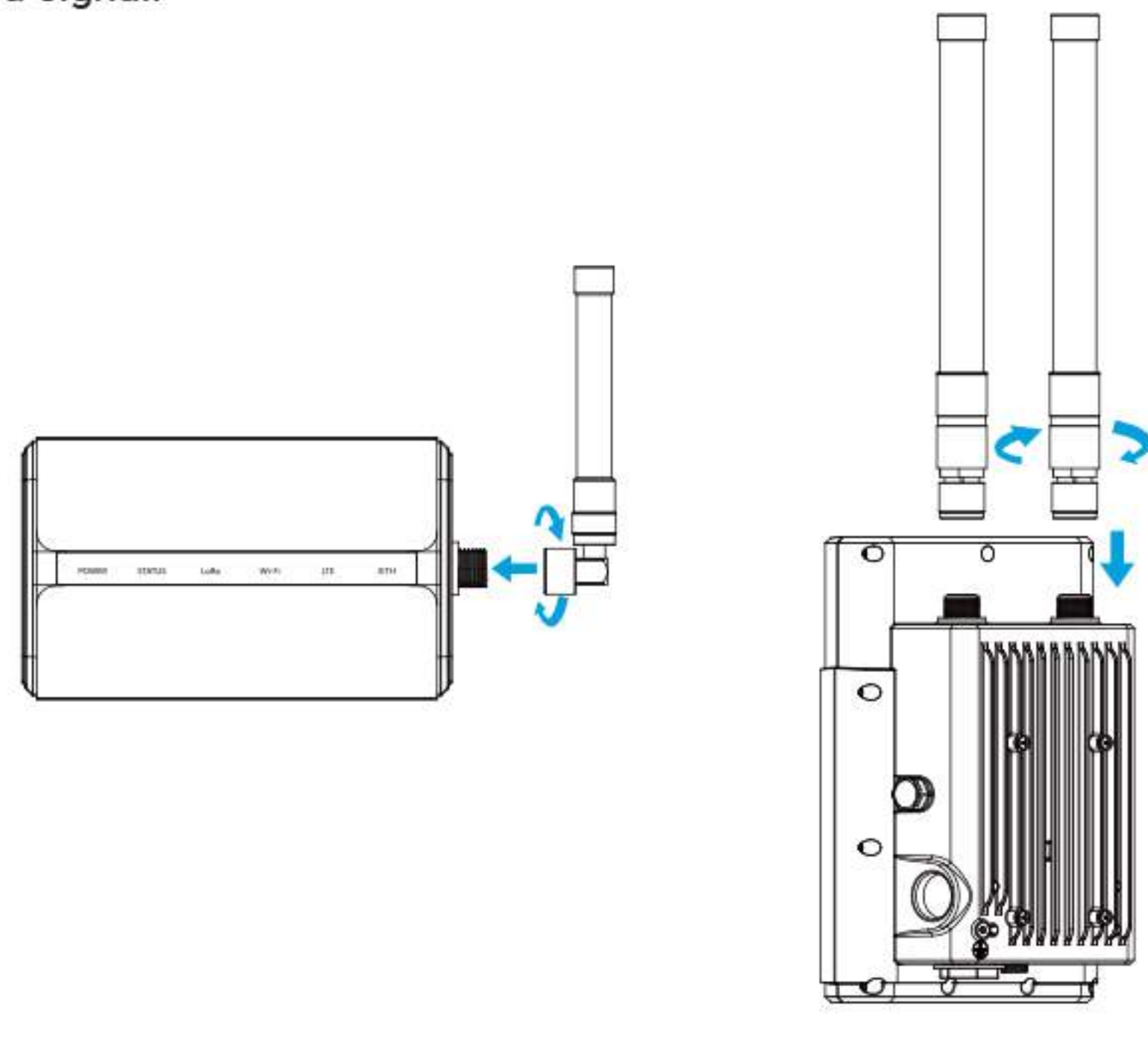
⚠ If any of the above items is missing or damaged, please contact your sales representative.

Hardware Introduction

UG65



Step2: Rotate the LoRa antenna into the antenna connector. The external antenna should be installed vertically and the device should be placed always on a site with a good signal.

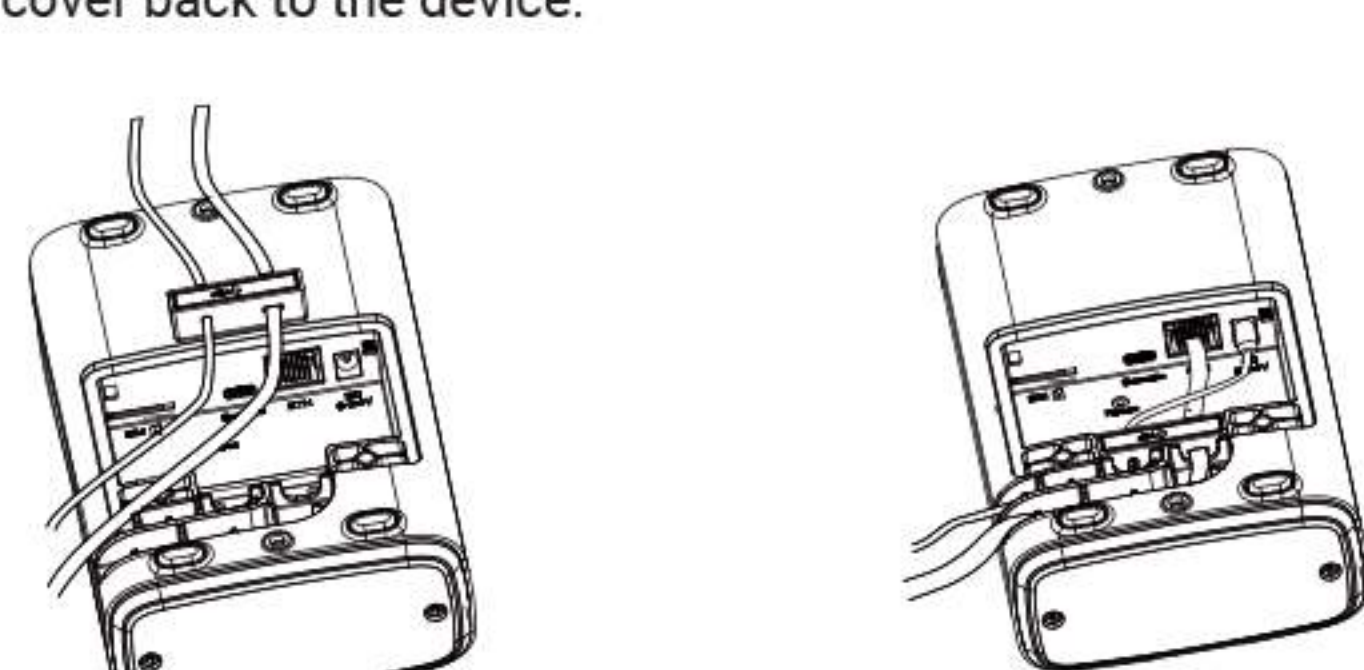


Note:

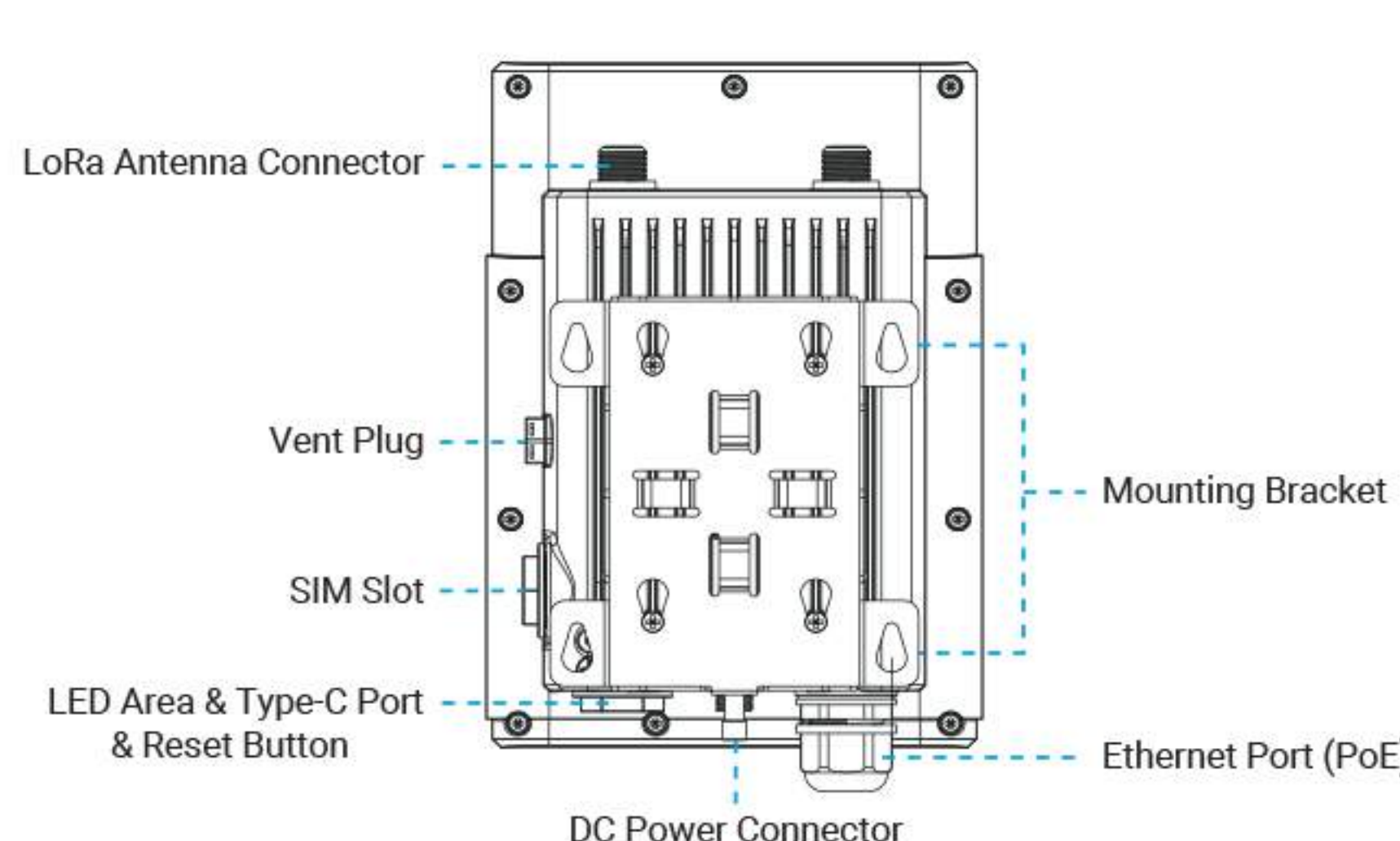
Please do not let the front panel of products face to walls if using embedded LoRa antennas.

Step 3: Install the power cable and Ethernet cable accordingly.

UG65: After connecting the Ethernet cable and power cable to corresponding interfaces, you can pass them through the waterproof silicone and slid into the grooves. Then screw the protective cover back to the device.



UG67

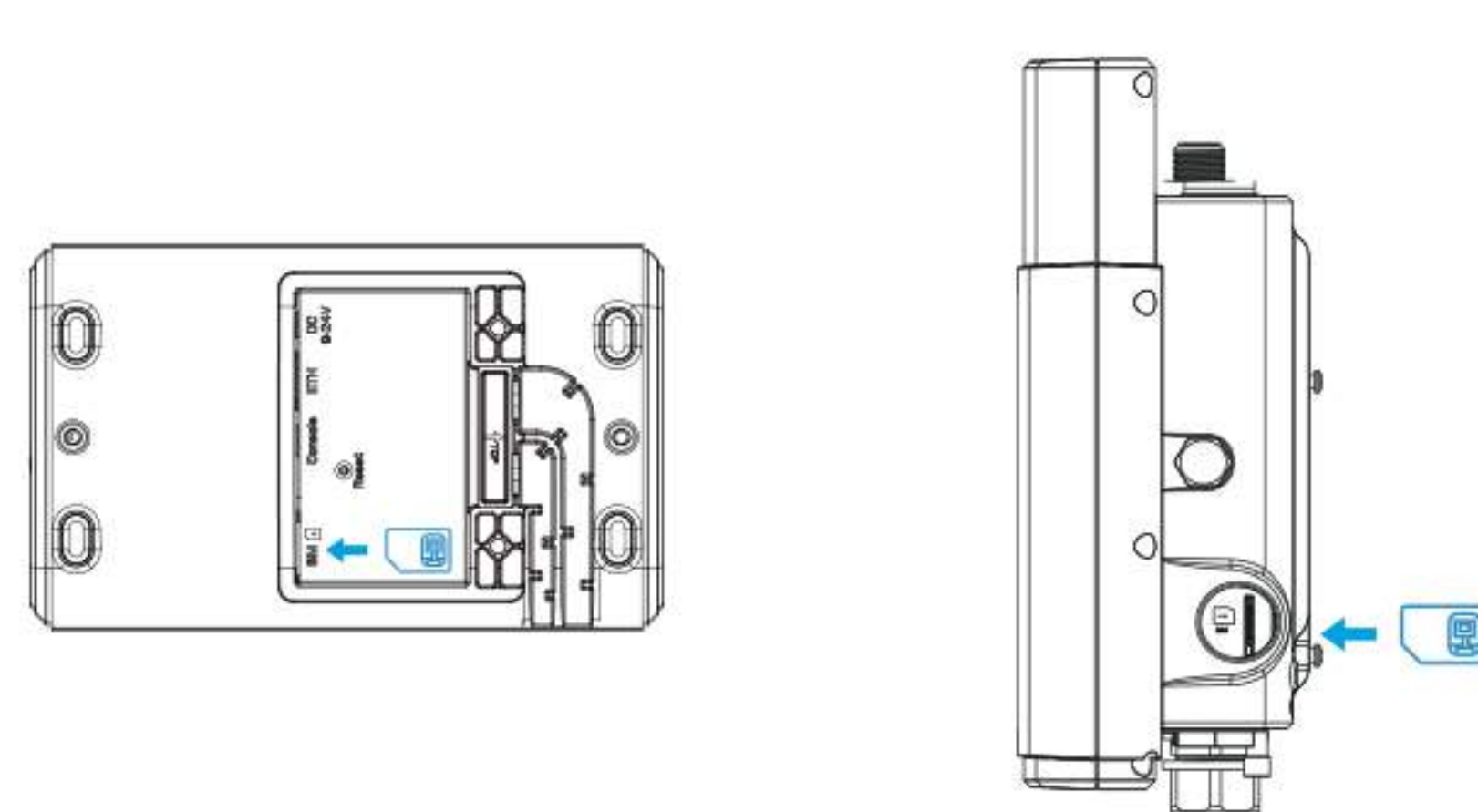


How to reset the equipment to factory default?

Press and hold the reset button for more than 5 seconds until STATUS/SYS LED is rapidly blinking.

Fitting Installation

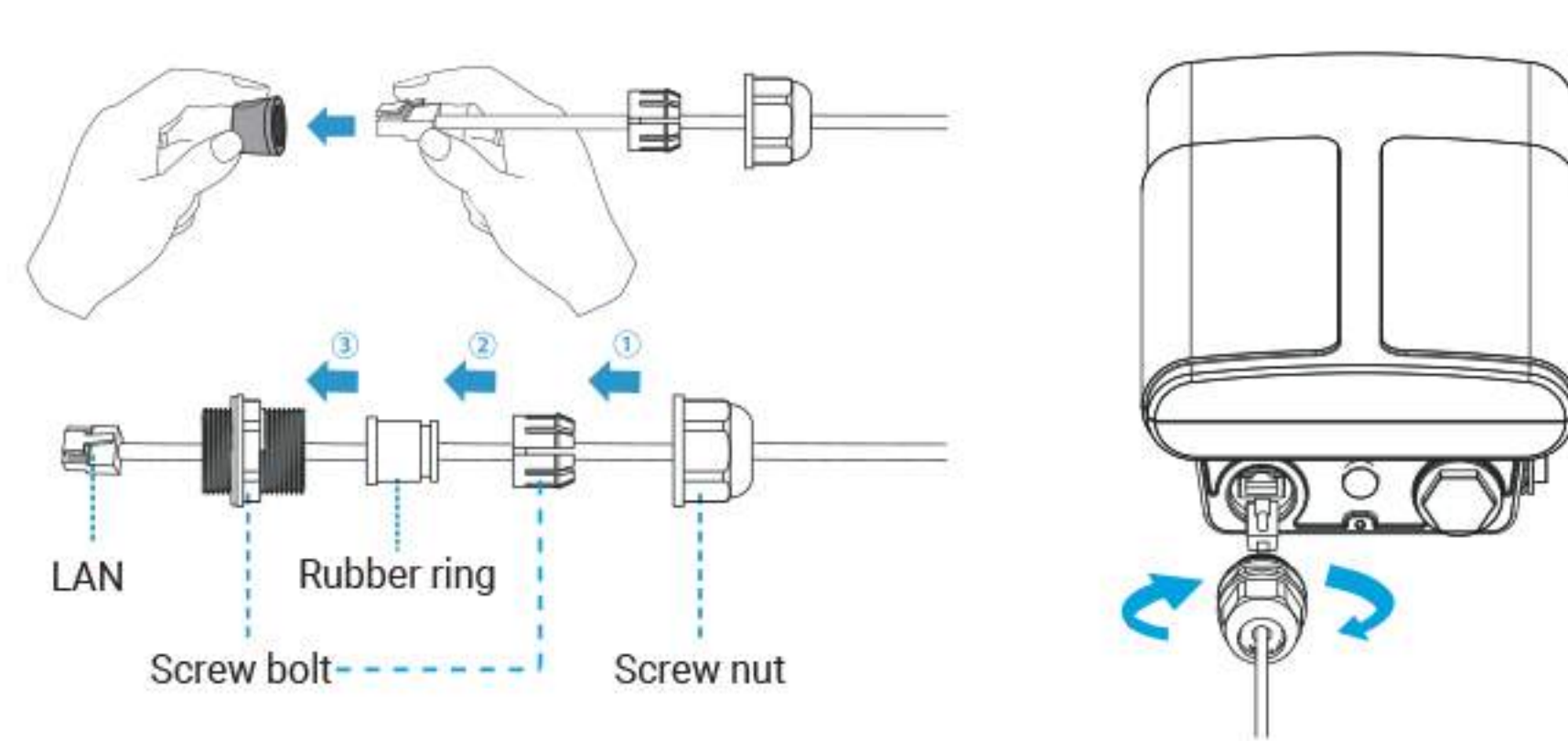
Step1: Insert the SIM card into the device according to arrows as follows. If you need to take out the SIM card, press into the SIM card and it will pop up automatically.



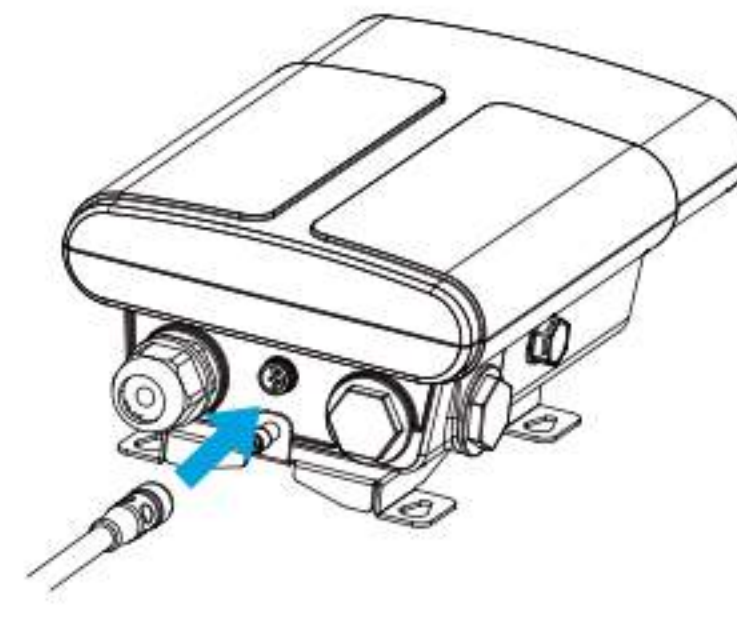
Note:

- UG6x does not support hot plugging (also called hot swapping). Please turn off the power before you insert or take off cards.
- Please tighten the SIM dust cover of UG67 with wrench to prevent water into the equipment.

UG67: Pass the Ethernet cable through the cable gland and rotate the cable gland to gateway, then tighten the cable gland with wrench.

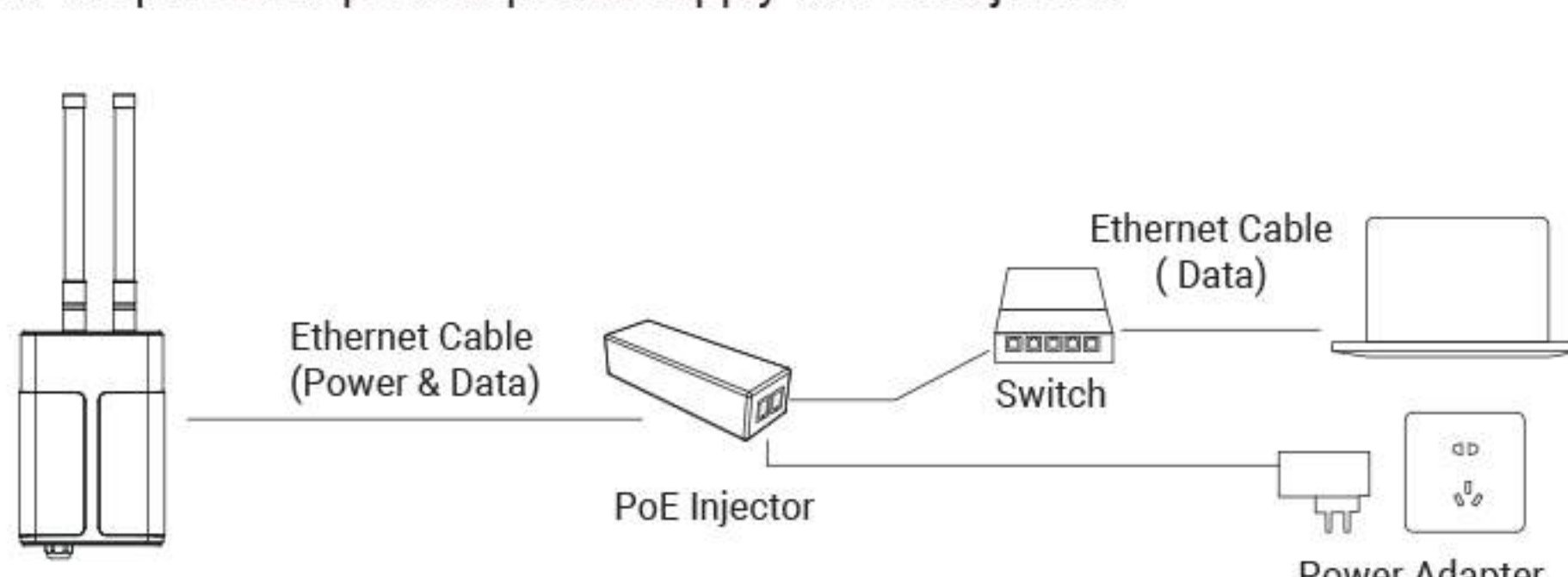


For DC power supply, remove the protective cap of power connector and rotate the DC power cable into the power connector.



PoE Supply

UG6x can be powered by 802.3af standard PoE injector or other PoE devices. Please follow the picture to provide power supply via PoE injector:



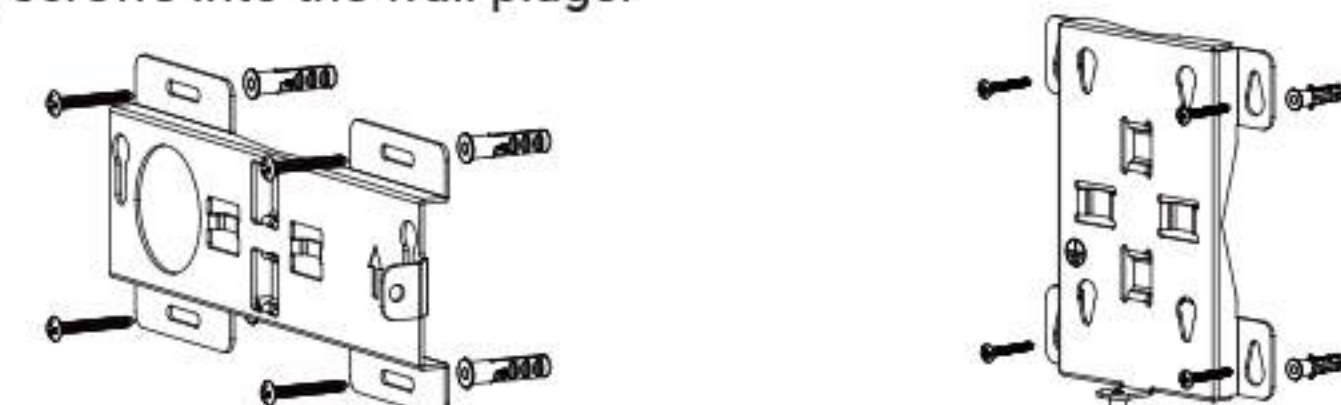
Gateway Installation

UG6x can be mounted to a wall or a pole. Before you start, make sure that your SIM card has been inserted, your antennas have been attached and all cables have been installed.

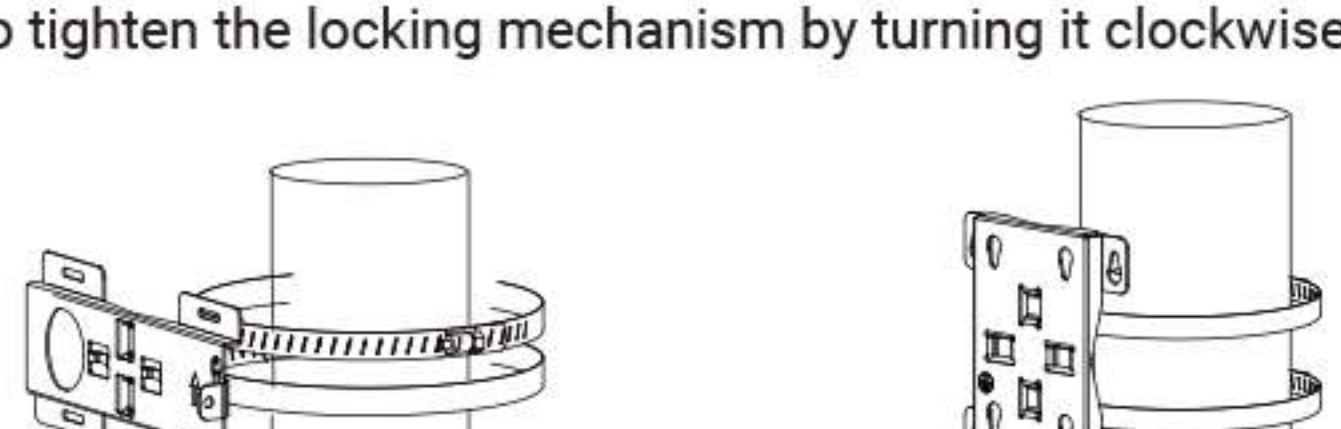
Note: Do not connect device to power supply or other devices when installing.

Step 1: Mounting Bracket Mounted

Wall mounting: Align the mounting bracket horizontally to the desired position on the wall, use a marker pen to note four mounting holes on the wall, and then remove the mounting bracket from the wall. Drill four holes with a depth of 32mm by using your drill with a 6mm drill bit on the positions you marked previously on the wall and insert four wall plugs into the holes respectively. Mount the mounting bracket horizontally to the wall by fixing the wall mounting screws into the wall plugs.

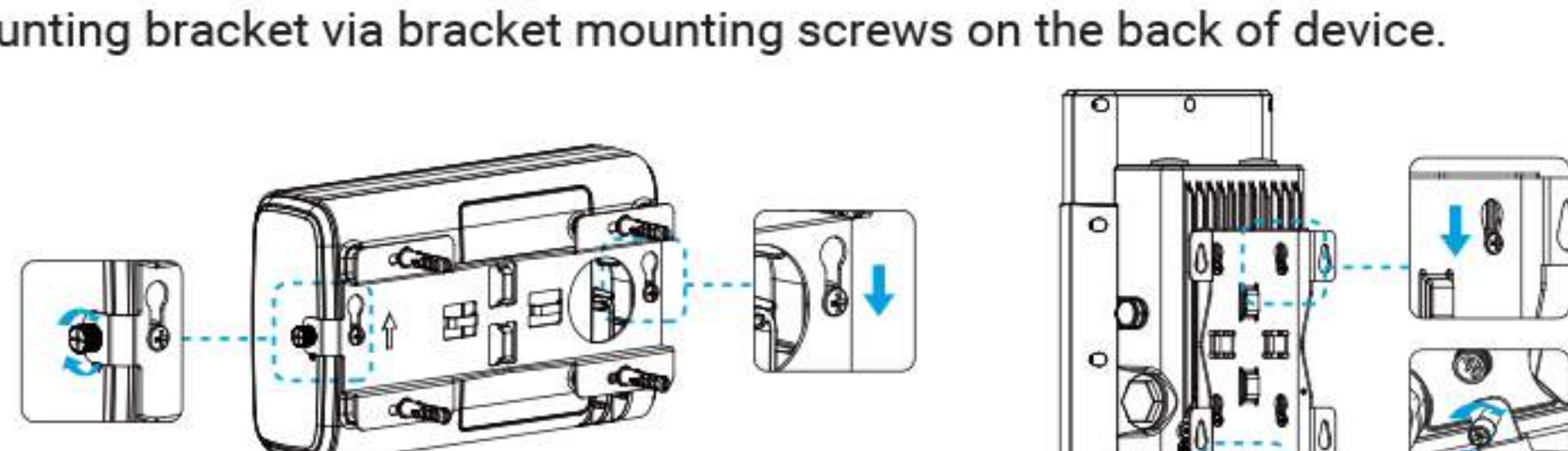


Pole mounting: Straighten out the hose clamp and slide it through the rectangular rings in the mounting bracket, wrap the hose clamp around the pole. After that use a screwdriver to tighten the locking mechanism by turning it clockwise.



Step 2: Gateway Mounted

Screw the bracket mounting screws behind the device and hang the device to the mounting bracket via bracket mounting screws on the back of device.



Web GUI Access

UG6x provides web-based configuration interface for management. If this is the first time you configure the gateway, please use the default settings below:

ETH IP Address: **192.168.23.150**
Wi-Fi IP Address: **192.168.1.1**
Wi-Fi AP: **Gateway_*******
Username: **admin**
Password: **password**
Browser: Chrome (recommended)

Here are 2 ways of accessing the web GUI:

- **Wireless Mode:** Enable Wireless Network Connection on your computer and search for access point "Gateway_*****" to connect it. Then, type 192.168.1.1 to your Internet browser to log in the web GUI of UG6x.
- **Wired Mode:** Connect Ethernet port of UG6x to your computer and configure the IP address of computer manually, then type 192.168.23.150 to your browser to log in the web GUI of UG6x. Here are steps of configuring computer IP address manually based on Windows 10 system.

A. Go to "Control Panel" → "Network and Internet" → "Network and Sharing Center", then click "Ethernet" (It may have different names).



B. Go to "Properties" → "Internet Protocol Version 4 (TCP/IPv4)" and select "Use the following IP address", then assign a static IP manually within the same subnet of UG6x.



Safety Precautions

Milesight will not shoulder responsibility for any loss or damage resulting from not following the instructions of this operating guide.

- The device must not be modeled in any way.
- Do not place the device close to objects with naked flames.
- Do not place the device where the temperature is below/above the operating range.
- Do not power on the device or connect it to other electrical device when installing.
- Check lightning and water protection in outdoor environment.
- Do not connect or power the equipment using cables that have been damaged.

Applicability

This Quick Guide is applicable to following products. For more functionality and advanced settings, please refer to Milesight website:

<https://www.milesight-iot.com>.

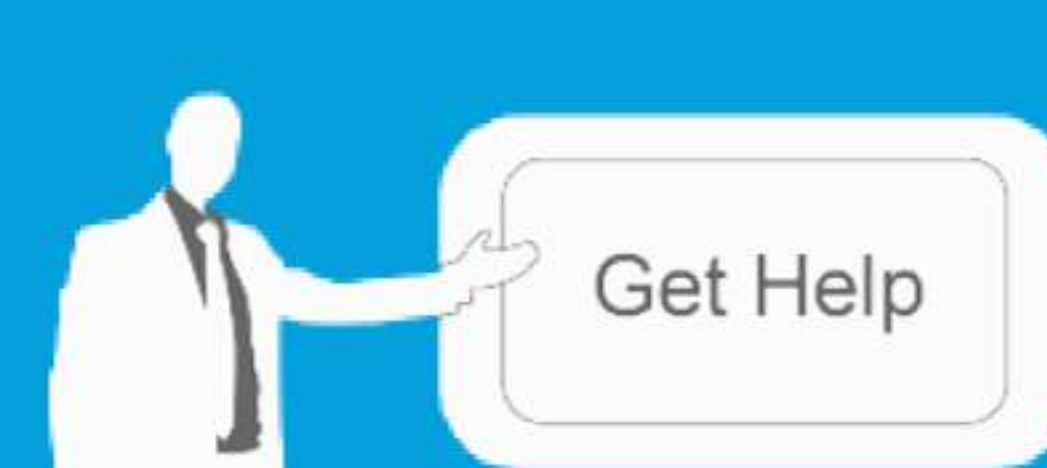
| Product | Description |
|---------|--------------------------|
| UG65 | Indoor LoRaWAN® Gateway |
| UG67 | Outdoor LoRaWAN® Gateway |

Declaration of Conformity

UG6x is in conformity with the essential requirements and other relevant provisions of the CE, FCC, and RoHS.



© Xiamen Milesight IoT Co., Ltd.
All rights reserved.



For assistance, please contact Milesight technical support:
Email: iot.support@milesight.com
Tel: 86-592-5085280
Fax: 86-592-5023065



Cloud App



Quick Start Guide



Xiamen Milesight IoT Co., Ltd. | www.milesight-iot.com

Better Inside, More in Sight